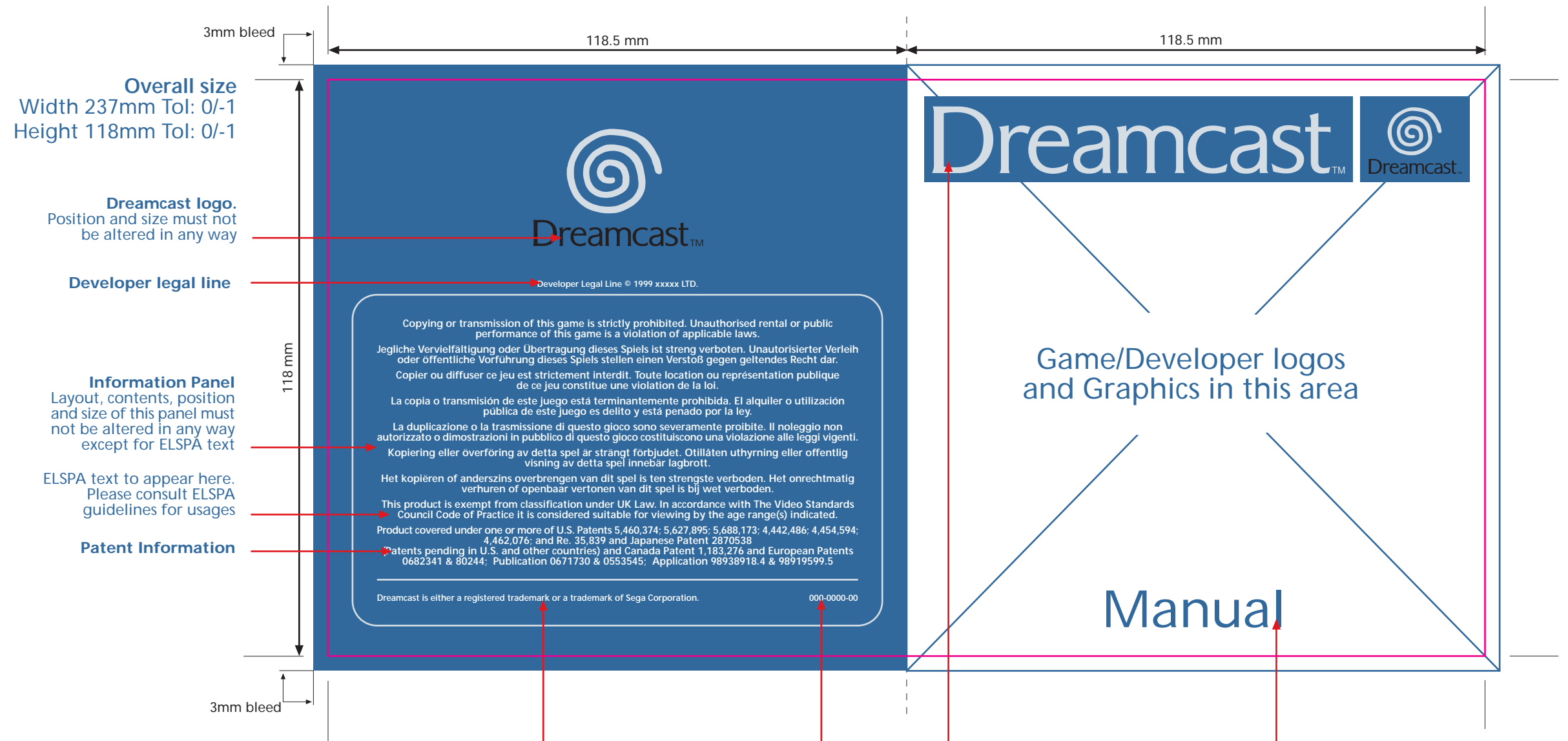


PLEASE NOTE:
Manual thickness is to be no more than 7mm



Dreamcast legal line must not be altered in any way

Part Number

Dreamcast Brand Identity panels.
Graphic supplied. These panels are supplied in Pantone 660 CV to ensure correct colour output and are supplied as a free plate. Size, position and colours should not be altered in any way. In no way are Game Graphics to overlay the holding panels. Please supply your files as CMYK plus 660 using Quark Xpress Documents provided. Any submission which deviates from templates will be rejected. The 'Online' Panel does not have to appear on the manual cover.

The word 'Manual' can appear if wished. But must not appear less than 35mm wide in English language, other languages to appear legible.